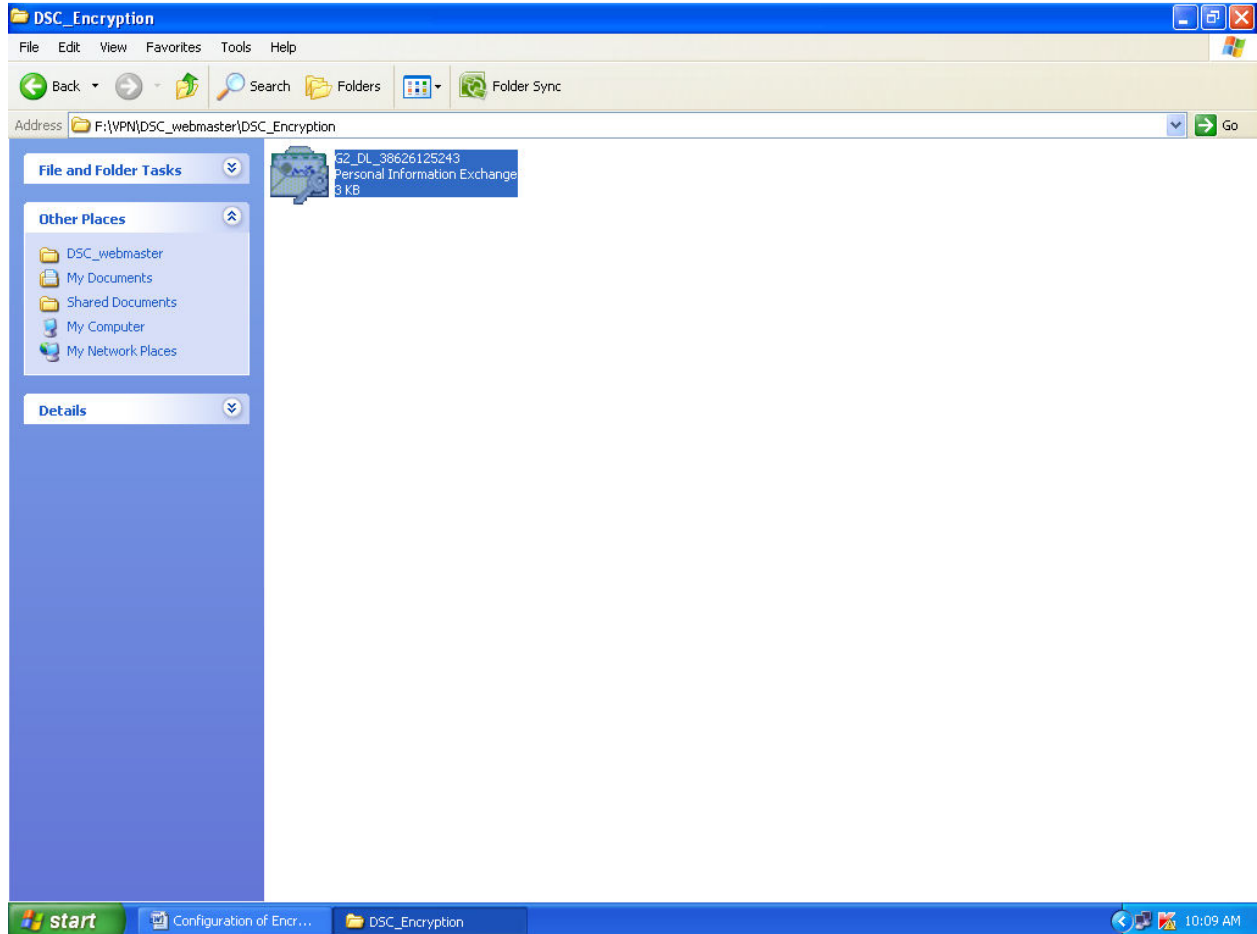
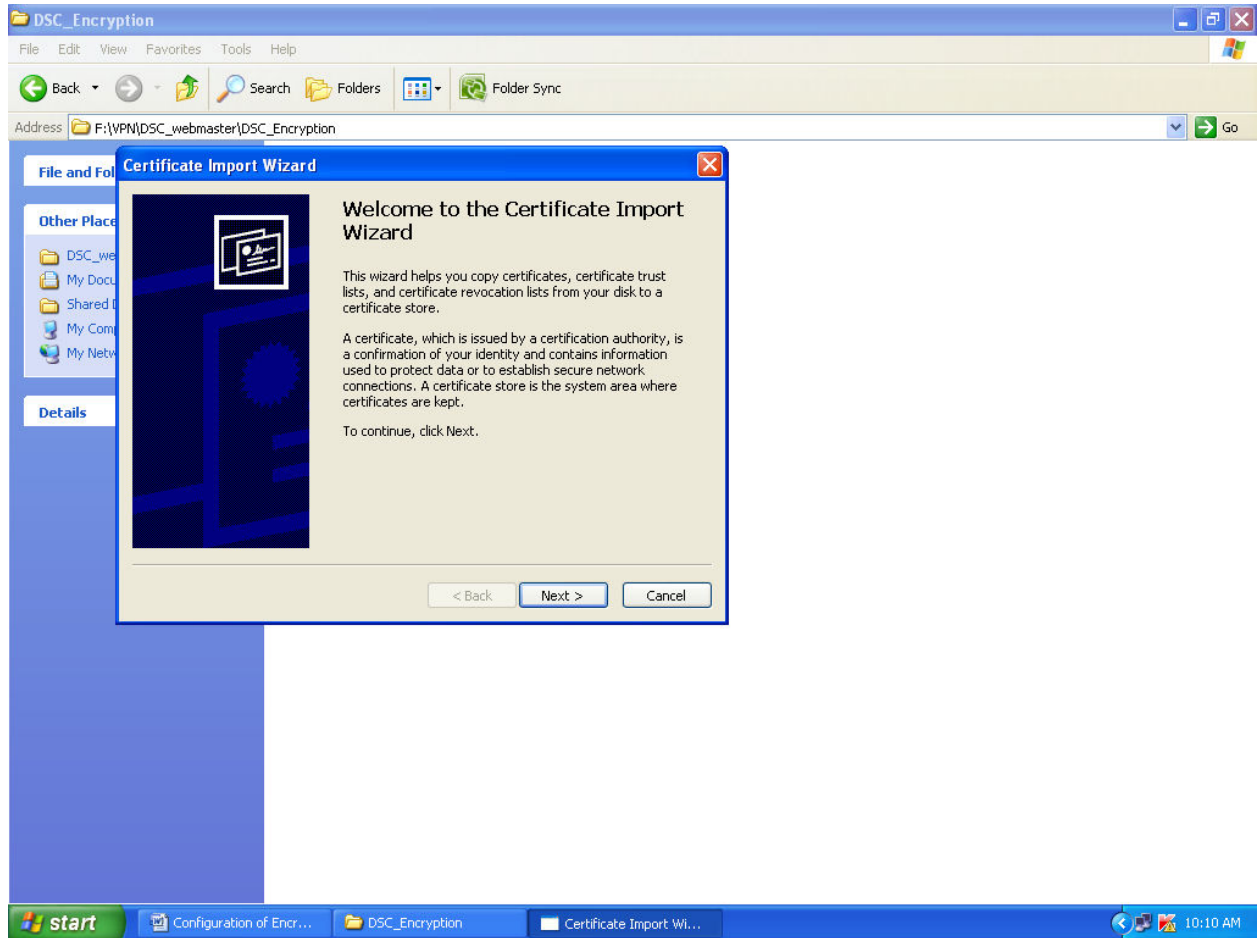


3. CONFIGURATION OF DOWNLOADED ENCRYPTION CERTIFICATE

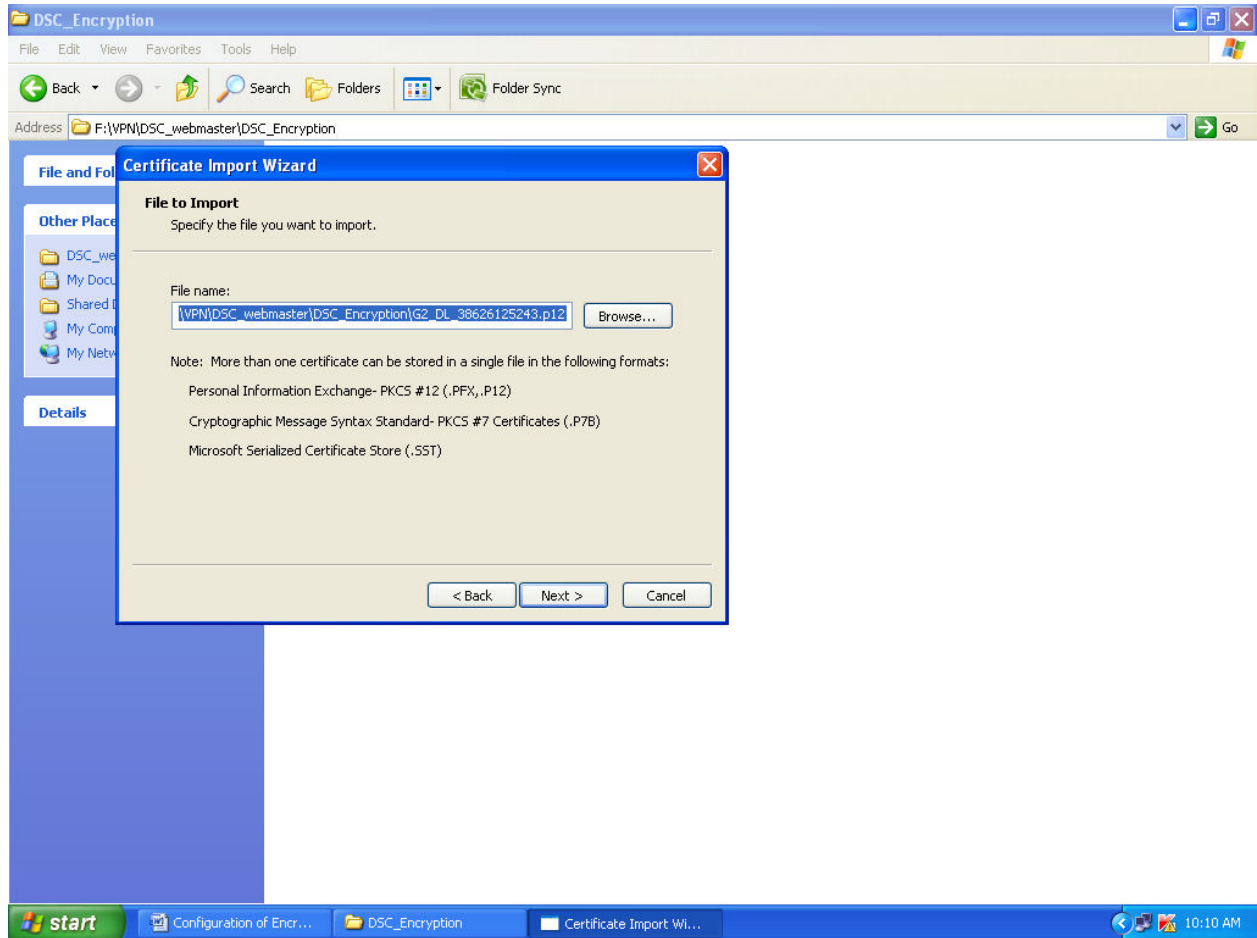
1. Double click on downloaded encryption certificate.



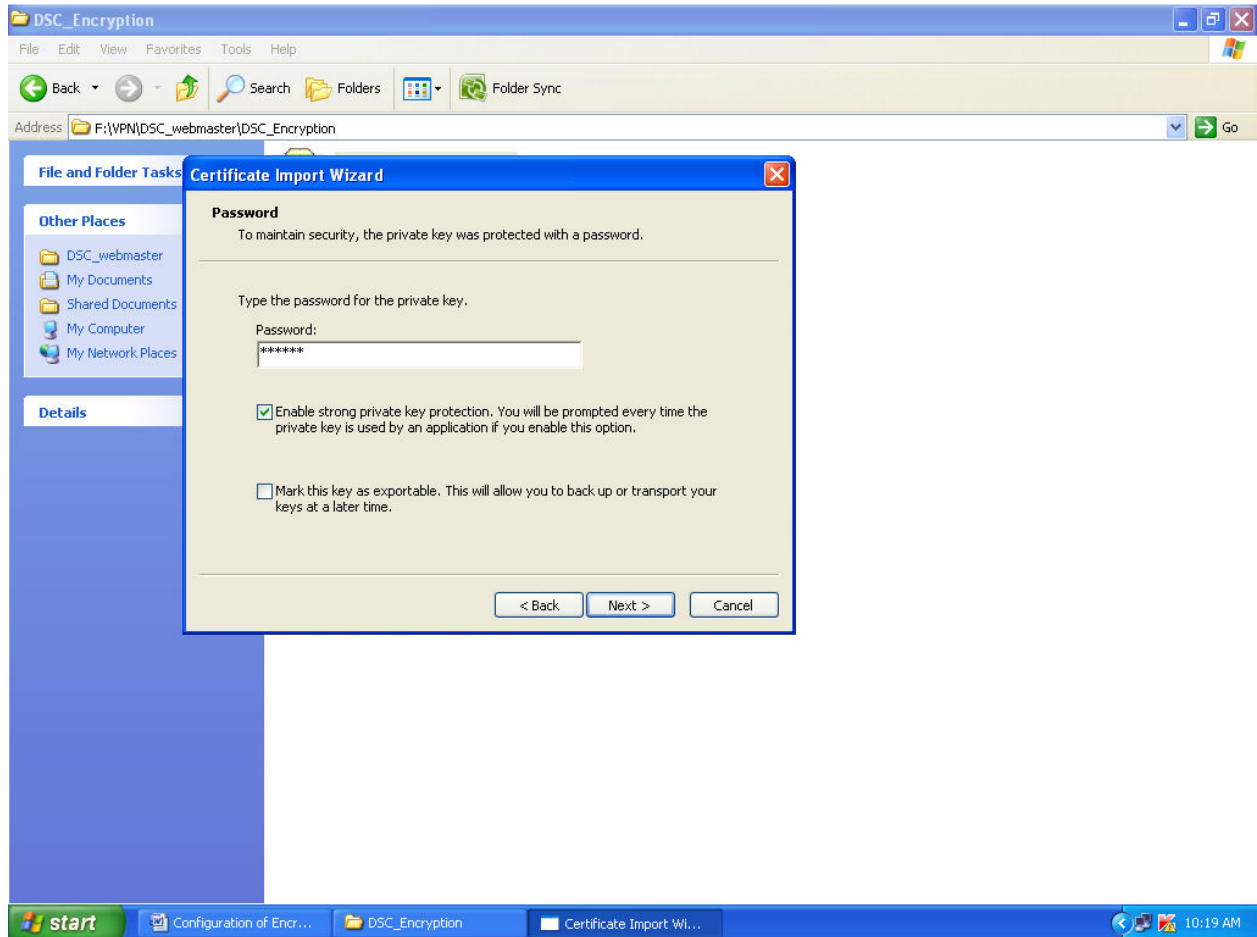
2. Click Next.



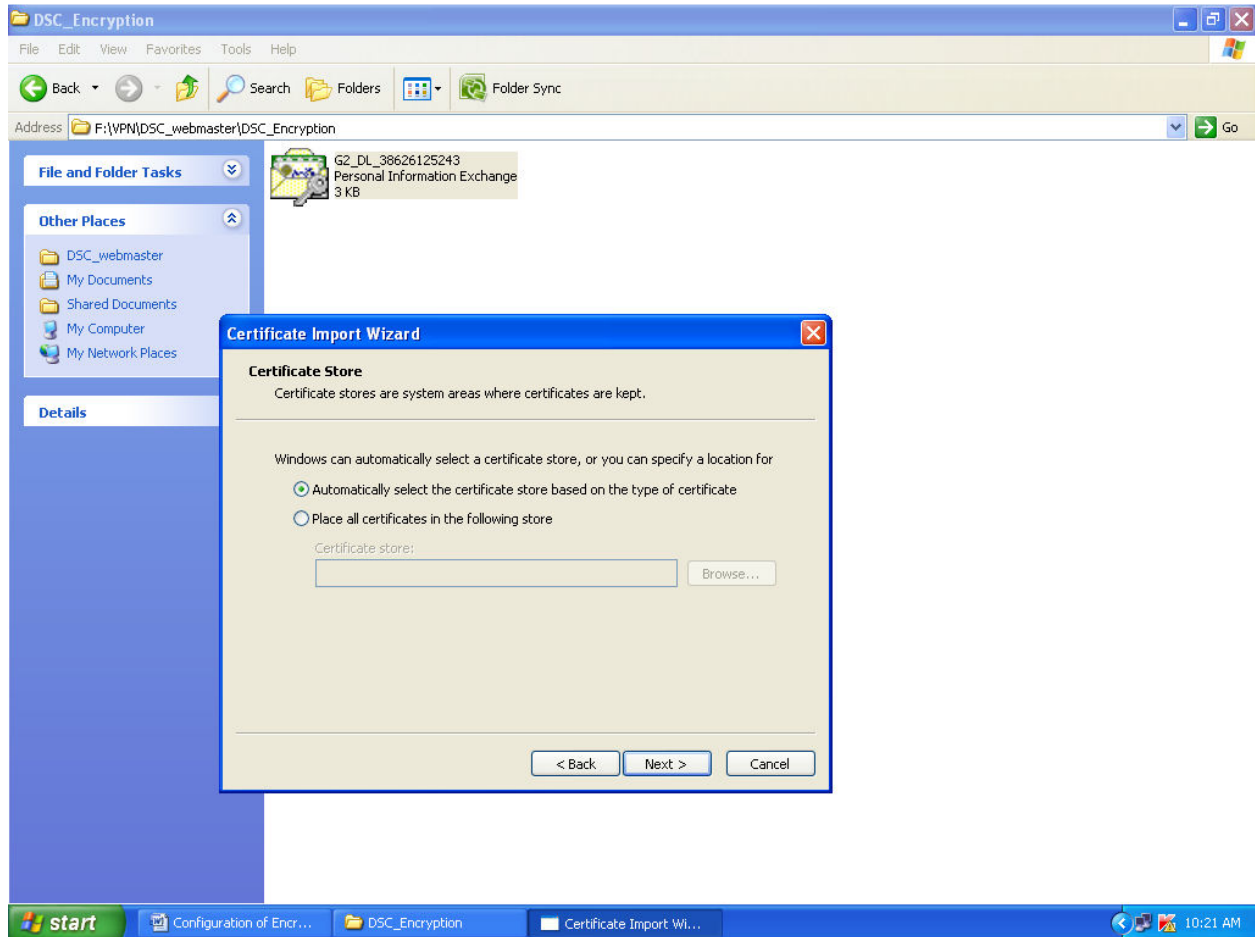
3. Click Next.



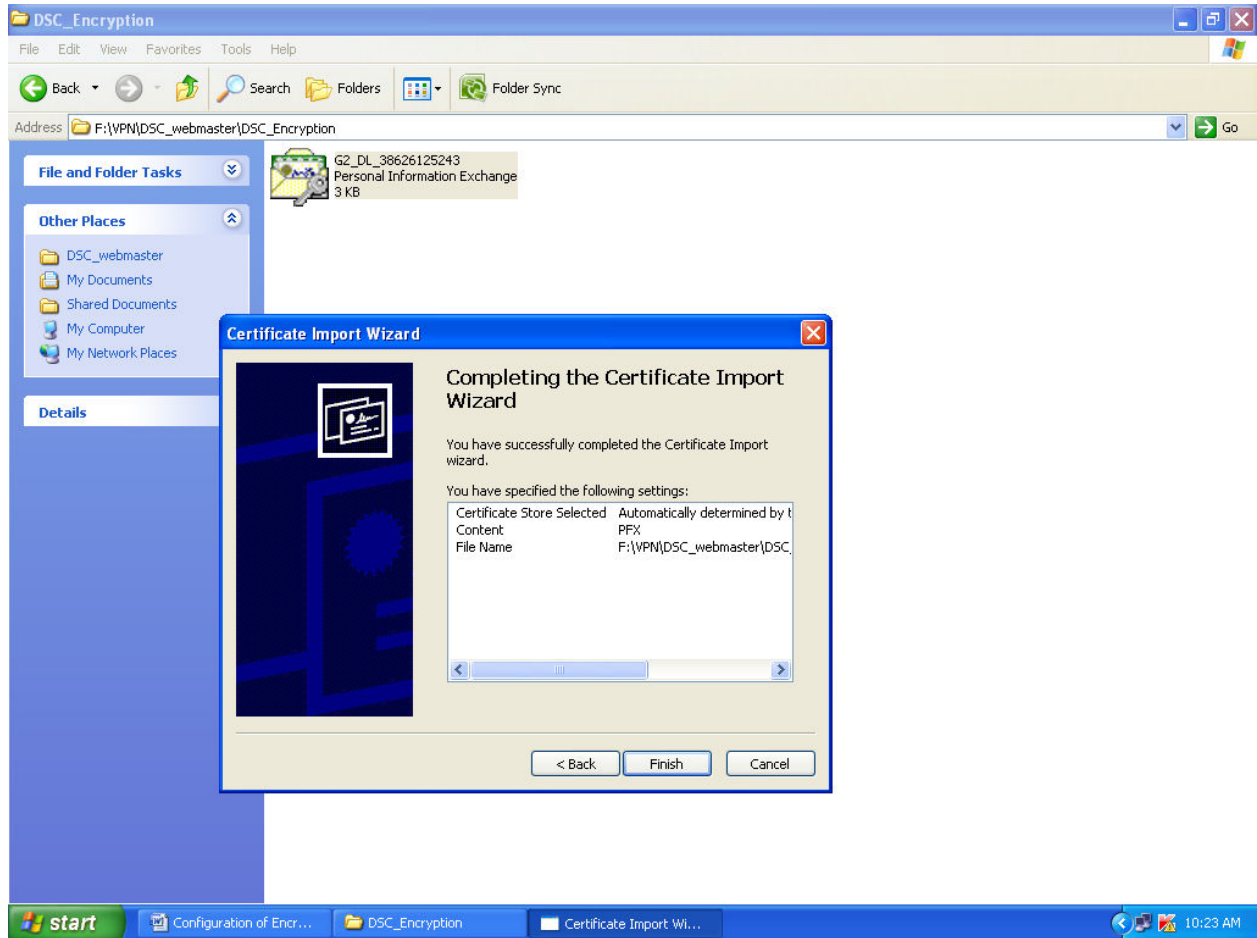
4. Give Password (Request No of Encryption Certificate is the password) and check strong private key protection and select Next.



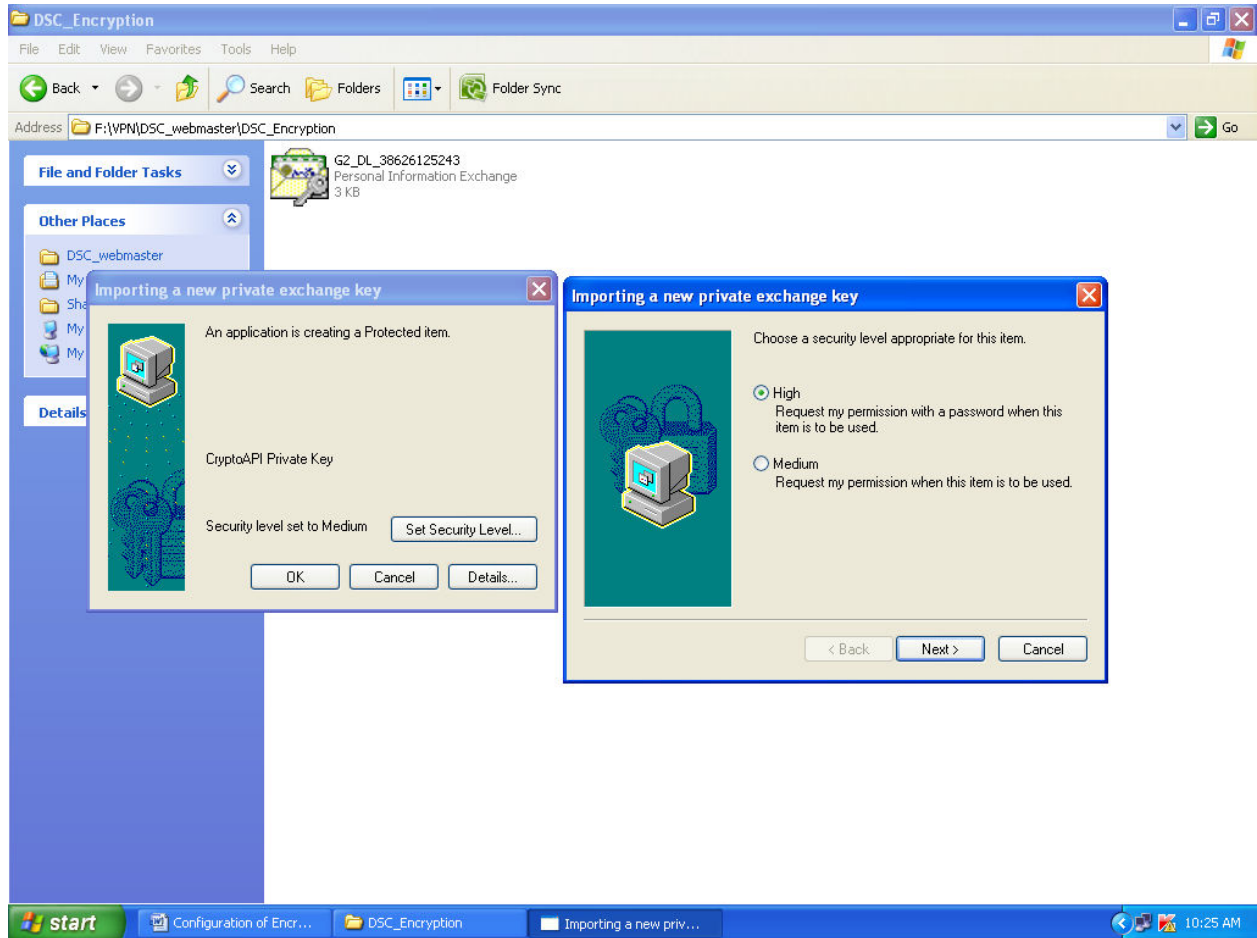
5. Check Automatically select the certificate store based on the type of certificate and select Next.



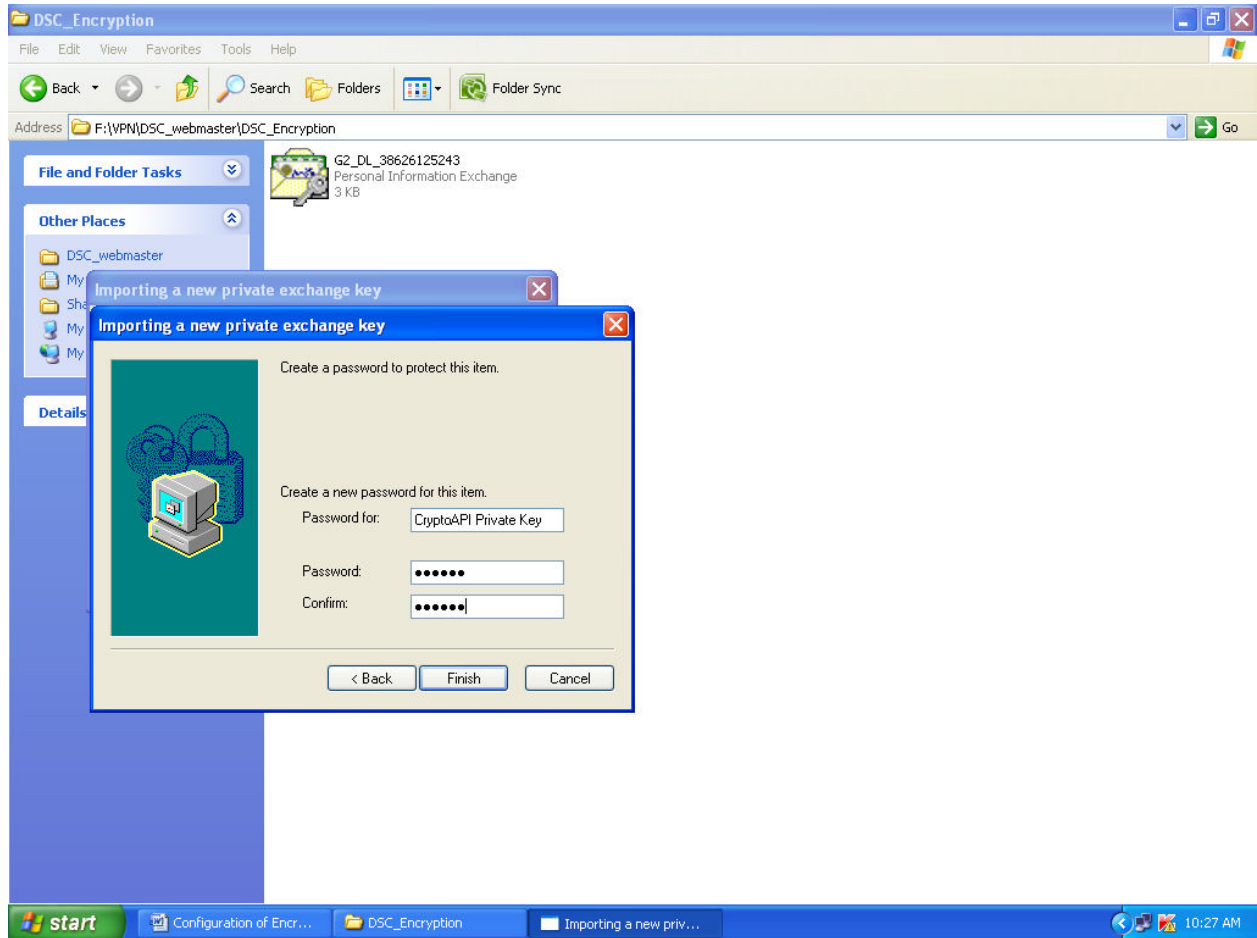
6. Click Finish.



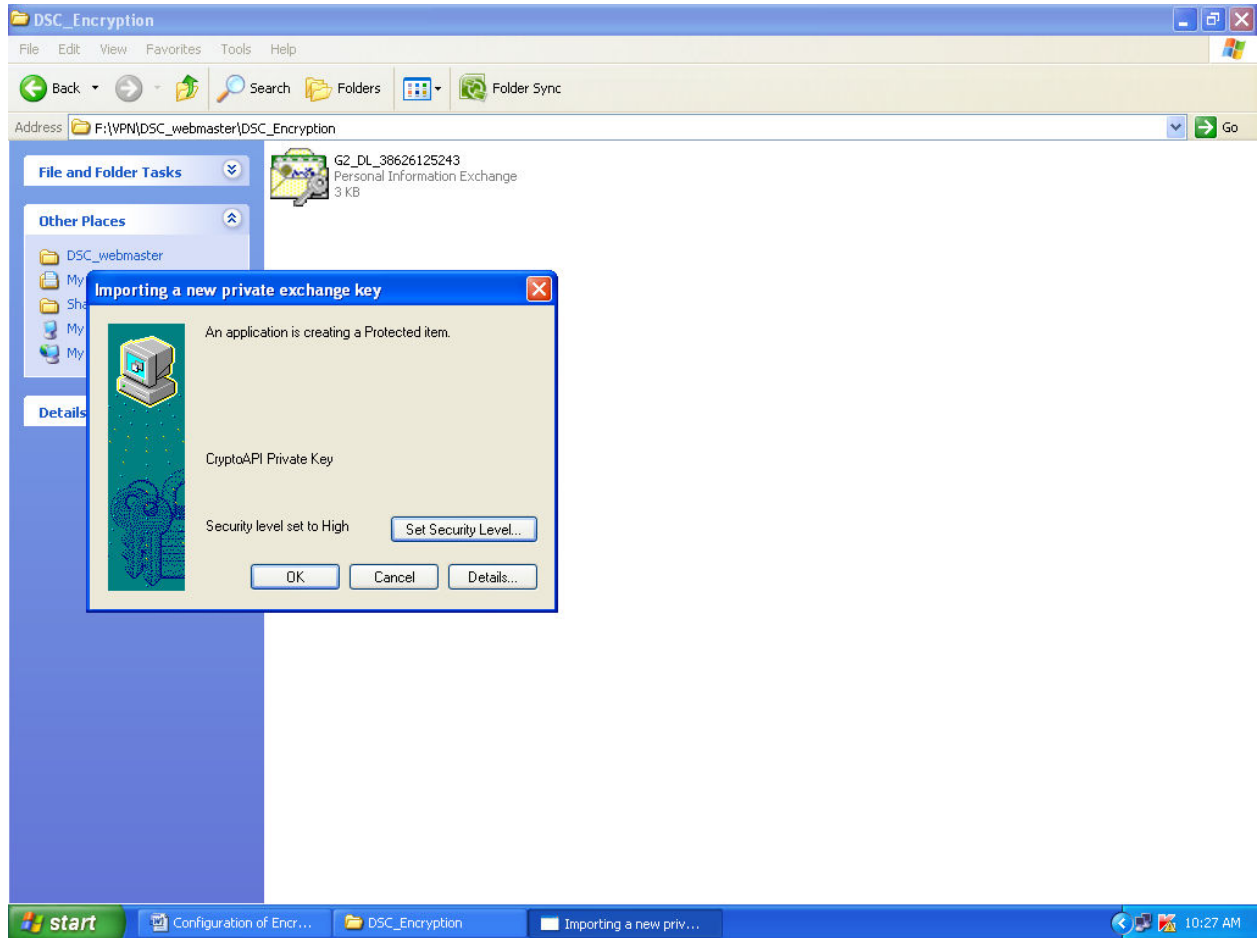
7. Click on security level and select High.



8. Click Next and give password then finish.



9. Click OK.



10. Click OK.

